

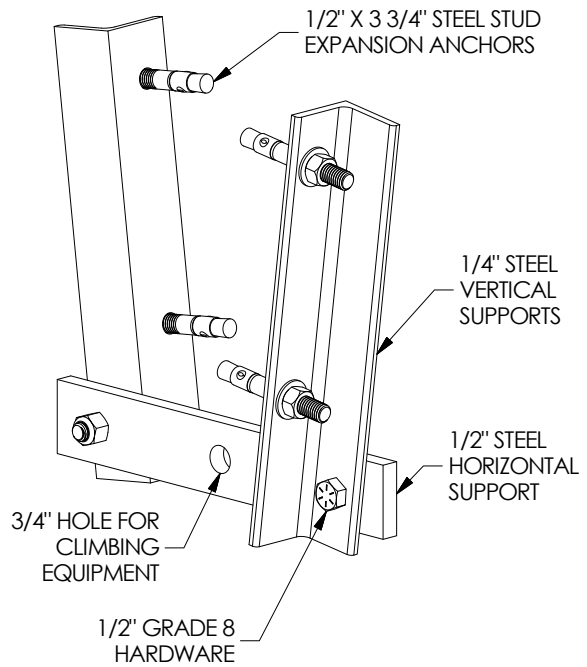
A-5 CONCRETE BEAM CLAMP

The Concrete Beam Clamp (A-5) is constructed of heavy duty steel brackets and is custom designed for each specific facility. The beam clamp consists of two vertical supports which anchor into each side of the concrete structure with two 1/2" steel stud expansion anchors. The horizontal support is anchored to the vertical supports with 1/2" Grade 8 hardware. The A-5 clamp includes the vertical and horizontal support assembly and four 1/2" steel stud expansion anchors. Beam clamp can be installed on square or tapered concrete beam profiles. Beam clamp supplied with a durable black finish. Specify exact concrete beam clamp dimensions at the time of ordering. Standard beam clamp is intended for beams between 4" - 8" wide, however, custom sizes are available.

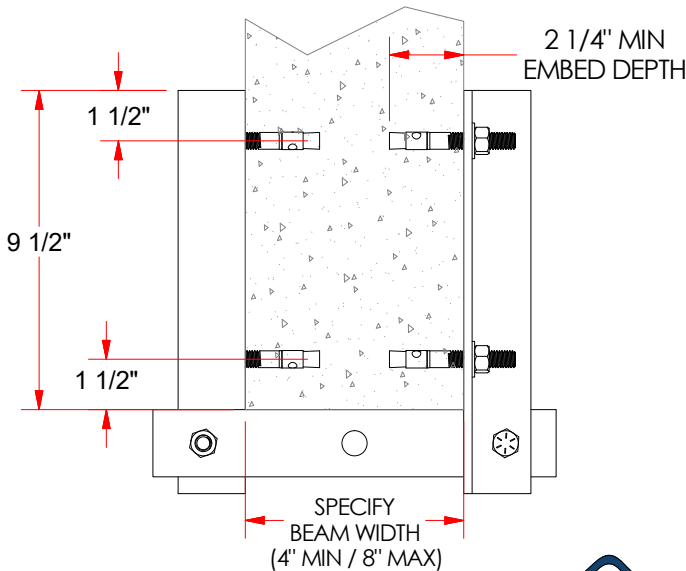
These beam clamps are specifically designed to mount to horizontal beams and withstand vertical loading. These beams clamps are not intended for angled / sloped beams or with any equipment involving swinging. Please refer to the specific net or rope installation for the recommended number of clamps for each specific piece of Jammarmfg equipment.

Climbing ropes and nets must be hung from structurally adequate structure which will exceed any load placed on the equipment. Most beams and ceiling framework in institutional buildings will meet this criteria, however, always confirm this with you architect, building plans, and / or structural engineering. Jammarmfg is not responsible for the structural adequacy of the building structure.

Please note, this beam clamp is not considered a permanent fixture and requires periodic inspection to ensure top performance. Safe working load rating for the A-5 beam clamp assembly is 1000 lbs.



SQUARE CONCRETE STRUCTURE



TAPERED CONCRETE STRUCTURE

